

Historic Preservation: Working For You or You can't plan where you are going Until you know where you've been!



Karen Marshall,
Heritage Preservation Coordinator
Chester County Planning Commission

Welcome to Chester County- a *special* place!



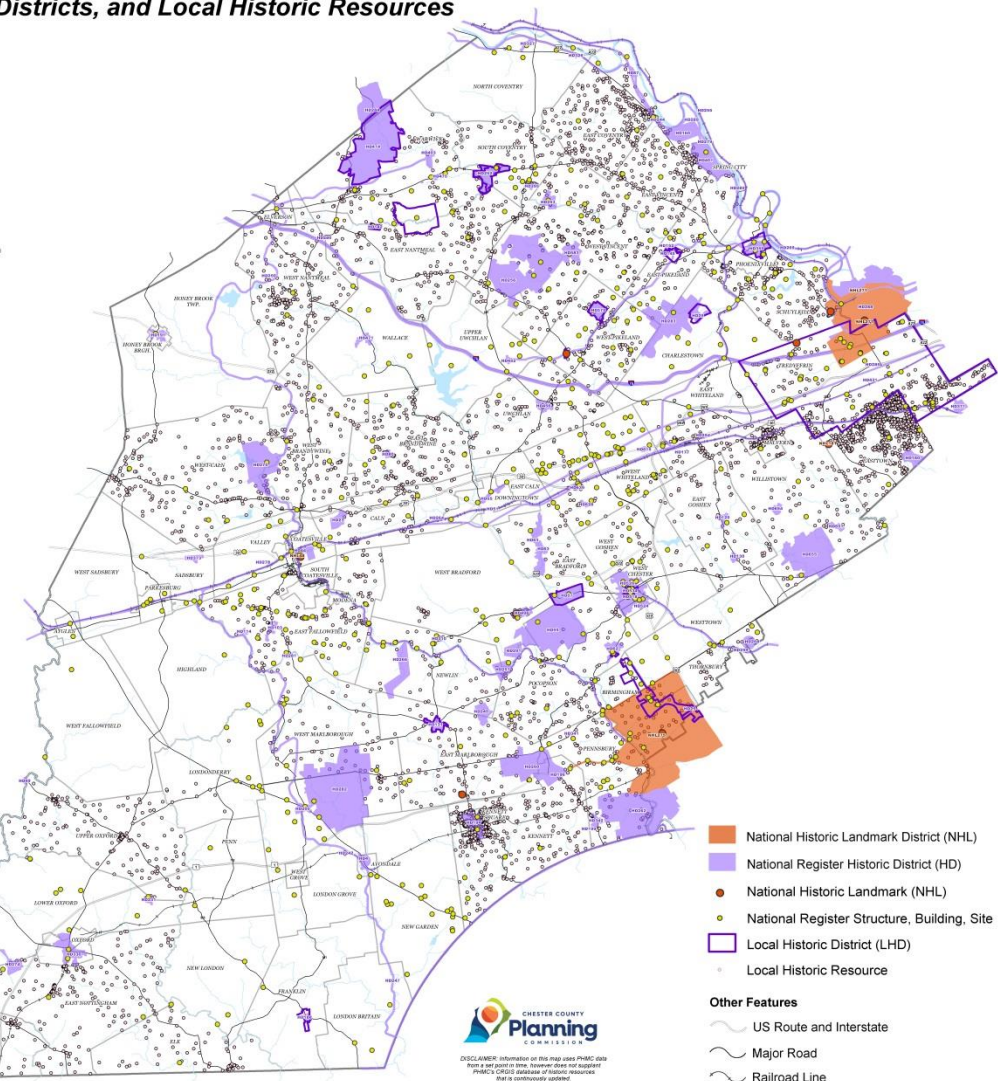
Chester County has an enduring history



National Register Eligible and Listed Historic Resources and Districts, Local Historic Districts, and Local Historic Resources

December 2014

ID	HISTORIC DISTRICT NAME
4010	Delaware Valley Canal
4011	Delaware Valley Canal
4012	Delaware Valley Canal
4013	Delaware Valley Canal
4014	Delaware Valley Canal
4015	Delaware Valley Canal
4016	Delaware Valley Canal
4017	Delaware Valley Canal
4018	Delaware Valley Canal
4019	Delaware Valley Canal
4020	Delaware Valley Canal
4021	Delaware Valley Canal
4022	Delaware Valley Canal
4023	Delaware Valley Canal
4024	Delaware Valley Canal
4025	Delaware Valley Canal
4026	Delaware Valley Canal
4027	Delaware Valley Canal
4028	Delaware Valley Canal
4029	Delaware Valley Canal
4030	Delaware Valley Canal
4031	Delaware Valley Canal
4032	Delaware Valley Canal
4033	Delaware Valley Canal
4034	Delaware Valley Canal
4035	Delaware Valley Canal
4036	Delaware Valley Canal
4037	Delaware Valley Canal
4038	Delaware Valley Canal
4039	Delaware Valley Canal
4040	Delaware Valley Canal
4041	Delaware Valley Canal
4042	Delaware Valley Canal
4043	Delaware Valley Canal
4044	Delaware Valley Canal
4045	Delaware Valley Canal
4046	Delaware Valley Canal
4047	Delaware Valley Canal
4048	Delaware Valley Canal
4049	Delaware Valley Canal
4050	Delaware Valley Canal
4051	Delaware Valley Canal
4052	Delaware Valley Canal
4053	Delaware Valley Canal
4054	Delaware Valley Canal
4055	Delaware Valley Canal
4056	Delaware Valley Canal
4057	Delaware Valley Canal
4058	Delaware Valley Canal
4059	Delaware Valley Canal
4060	Delaware Valley Canal
4061	Delaware Valley Canal
4062	Delaware Valley Canal
4063	Delaware Valley Canal
4064	Delaware Valley Canal
4065	Delaware Valley Canal
4066	Delaware Valley Canal
4067	Delaware Valley Canal
4068	Delaware Valley Canal
4069	Delaware Valley Canal
4070	Delaware Valley Canal
4071	Delaware Valley Canal
4072	Delaware Valley Canal
4073	Delaware Valley Canal
4074	Delaware Valley Canal
4075	Delaware Valley Canal
4076	Delaware Valley Canal
4077	Delaware Valley Canal
4078	Delaware Valley Canal
4079	Delaware Valley Canal
4080	Delaware Valley Canal
4081	Delaware Valley Canal
4082	Delaware Valley Canal
4083	Delaware Valley Canal
4084	Delaware Valley Canal
4085	Delaware Valley Canal
4086	Delaware Valley Canal
4087	Delaware Valley Canal
4088	Delaware Valley Canal
4089	Delaware Valley Canal
4090	Delaware Valley Canal
4091	Delaware Valley Canal
4092	Delaware Valley Canal
4093	Delaware Valley Canal
4094	Delaware Valley Canal
4095	Delaware Valley Canal
4096	Delaware Valley Canal
4097	Delaware Valley Canal
4098	Delaware Valley Canal
4099	Delaware Valley Canal
4100	Delaware Valley Canal



- National Historic Landmark District (NHL)
- National Register Historic District (HD)
- National Historic Landmark (NHL)
- National Register Structure, Building, Site
- Local Historic District (LHD)
- Local Historic Resource

- Other Features**
- US Route and Interstate
 - Major Road
 - Railroad Line
 - Municipality
 - Hydrography

CHESTER COUNTY
Planning
COMMISSION

DISCLAIMER: Information on this map was derived from a best point in time, however does not represent the current condition of historic resources. Map is continuously updated.

Local historic resources shown represents available data as of the map date, and does not necessarily show all municipal or other identified local historic resources.

0 0.5 1 Miles

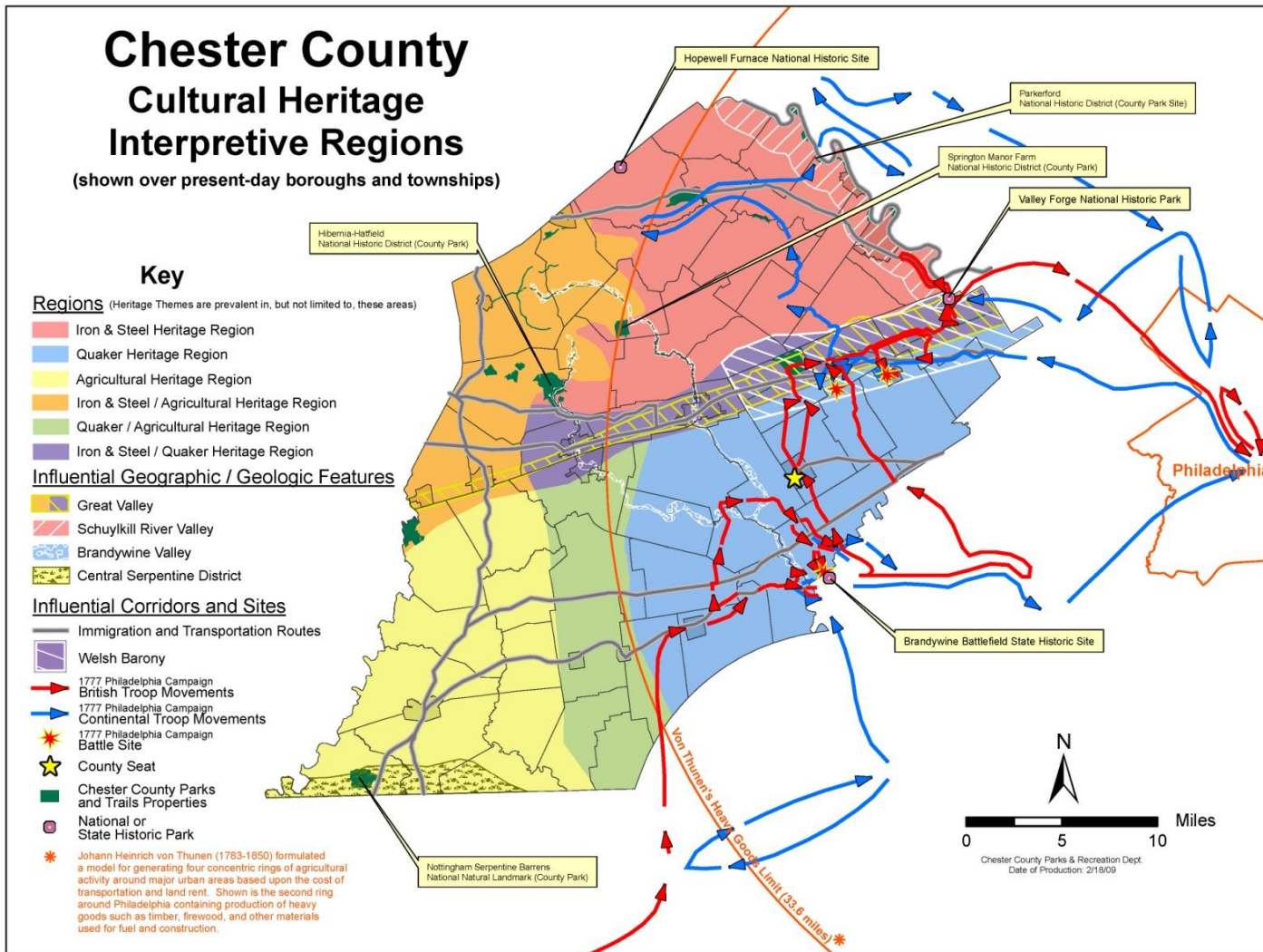


Chester County is fortunate to have many historic resources that form a varied landscape

From House Museums to Neighborhoods to Rural Landscapes...



...which tell many stories.



Landscapes2
Chester County Comprehensive Policy
Plan
Chapter 8: Planning for Historic
Resources

Goal for Historic Resources:

Protect and maintain Chester County's fabric of historic and archaeological resources and cultural landscapes for the benefit of current and future generations while promoting sustainable development.

A brief history....



Theodosius, Valentinianus, Arcadius

377-408 AD

“It is forbidden to disfigure external decorations on private buildings through modern additions, and to spoil historic buildings in an important town out of avarice and the desire to make money.”



Early Interest In Heritage



“Those desirous of seeing the interior of the house are requested to ring at the door of the entrance and express their desire. It is wished the practice of stopping on the paved walk to look in the windows should be discontinued.”

1839, Duke of Wellington

Mount Vernon: America's First White Elephant



Yellowstone: The World's First Public Park



Trustees of Reservations



The 1891 Trustees of Reservations in Massachusetts was the world's first land trust created to "acquire, hold, protect and administer, for the benefit of the public, beautiful and historical places."

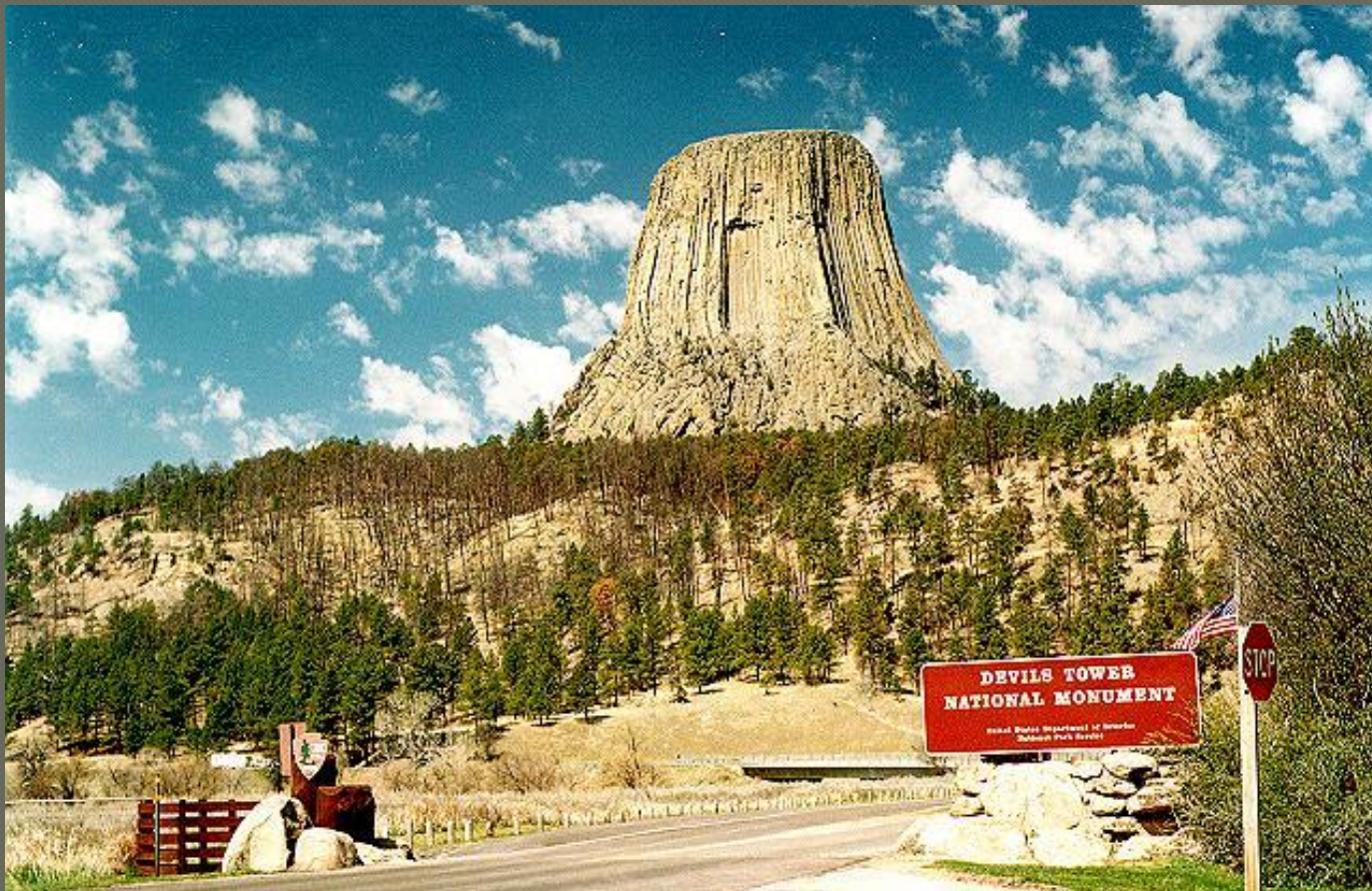
The National Trust



In England, Wales and Northern Ireland, the National Trust for Places of Historic Interest or Natural Beauty was formed 4 years later.



1906 Antiquities Act
Devil's Tower declared a National Monument by
Theodore Roosevelt



Local Historic Preservation

1920: Preservation of Society of Charleston founded by Susan Pringle Frost

1931: Charleston passed the first historic preservation ordinance in the US to protect its historic landscape



1935 Historic Sites and Buildings Act

Directed the Secretary of the Interior to secure data; make surveys; and to research, acquire properties, enter into contracts, restore buildings, erect markers, and develop educational programs.



National Highway Act of 1956

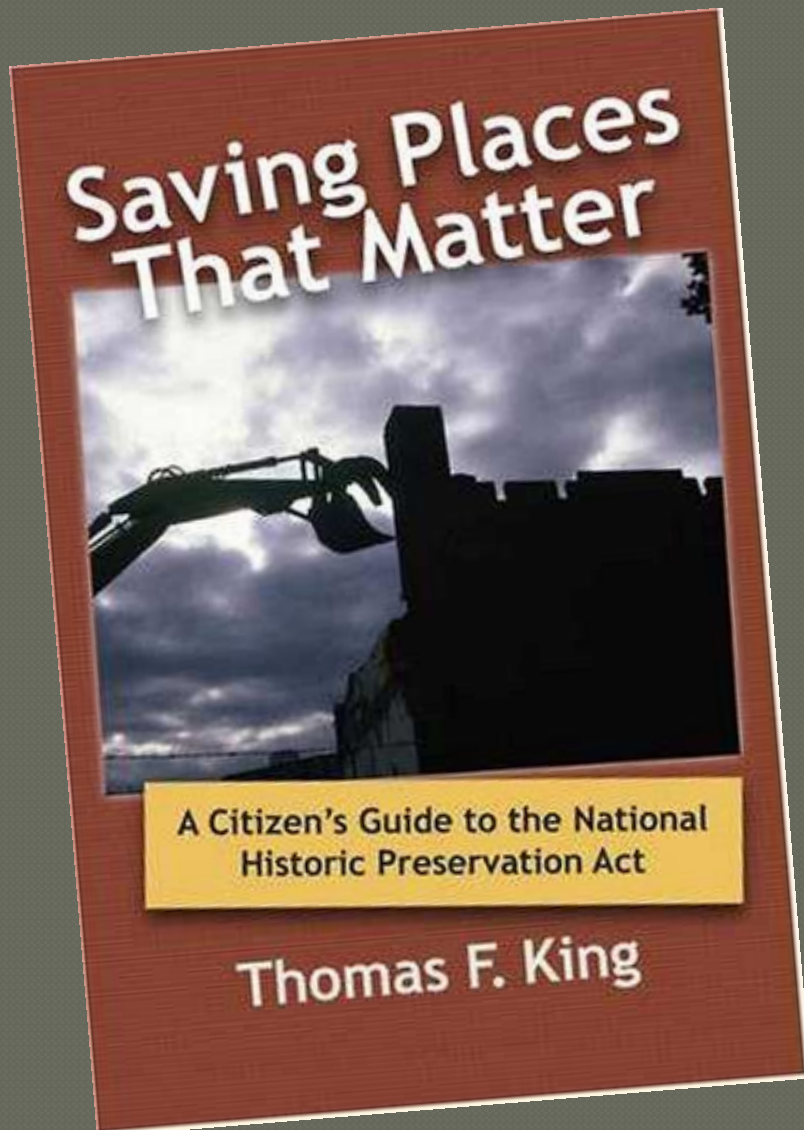


www.shutterstock.com · 6234271

National Historic Preservation Act signed into law by President Lyndon B. Johnson in 1966



The National Historic Preservation Act of 1966



- (1) the spirit and direction of the Nation are founded upon and reflected in its historic heritage;
- (2) the historical and cultural foundations of the Nation should be preserved as a living part of our community life and development in order to give a sense of orientation to the American people;
- (3) the preservation of this irreplaceable heritage is in the public interest so that its vital legacy of cultural, educational, aesthetic, inspirational, economic, and energy benefits will be maintained and enriched for future generations of Americans;

Pennsylvania Constitution Article I, Section 27 (1971)



COMMONWEALTH OF PENNSYLVANIA

The people have a right to clean air, pure water, and to the preservation of the natural, scenic, historic and esthetic values of the environment. Pennsylvania's public natural resources are the common property of all the people, including generations yet to come. As trustee of these resources, the Commonwealth shall conserve and maintain them for the benefit of all the people.



SECTION 27
ARTICLE I
PENNSYLVANIA CONSTITUTION



Two Critical Court Cases that Support the Constitutionality of Preservation Regulations

- Penn Central Transportation Co. v. New York City, 438 U.S. 104 (1978)
- United Artists Theater Circuit, Inc. v. City of Philadelphia
(United Artists II) 635 A2d 612 (Pa. 1993)

A Historic Resource is:

50 years or older with architectural, engineering, archaeological, or cultural remains present in districts, sites, buildings, landscapes or structures that possess integrity of location, design, setting, materials, workmanship, feeling and association. It is representative and contributing to an understanding of the broad patterns of local, state or national history. Each site should be associated with one or more of the following historical or cultural themes:

- Those that are associated with the events that have made a significant contribution to the broad patterns of history
- Those that are associated with the lives of persons significant in our past
- Those that embody the distinctive characteristics of a type, period, or method of construction, or that represent the work of a master, or that possess high artistic values; or that represent a significant and distinguishable entity whose components may lack individual distinction
- Those that have yielded, or may be likely to yield, information important to prehistory or history.

A Historic Resource is determined based upon three standards:

50 years or older?
When was it important?
Does it still represent that time period?

Age

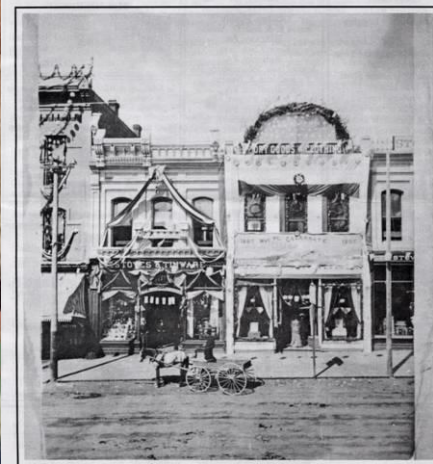
- Provides an important example,
- Played an important role, or
- Can yield important information

Significance

Integrity

- Location
- Design
- Setting
- Materials
- Workmanship
- Feeling
- Association

Chester County Strategies



Main Street, Ridgway 1887



The mission of the CCHPN is to connect local governments, organizations, and individuals in their efforts to protect, preserve, and promote the historic resources and cultural landscapes of Chester County through communication and education.

The vision of the CCHPN is to enhance the quality of life and community character of Chester County through historic preservation.

Supporting the work of local preservation efforts:

- Effective Municipal Planning
- Historic Resource Documentation
& Preservation
- Education & Interpretation of
Municipal history
- Heritage Events & Tourism



The Chester County Historic Resource Atlas Project

Chester County, Pennsylvania

West Nottingham Township Historic Resource Atlas



Presented by:

The Chester County Board of Commissioners,
The Chester County Department of Computing and Information Services--Geographic Information Systems Division (DCIS-GIS),
The Chester County Department of Parks & Recreation,
The Chester County Historic Preservation Network,
and The Malvern Historical Commission

Windshield Survey techniques:

- (1) complete Architectural Inventory Forms (AIF);
- (2) take & log architectural photography;
- (3) identify the property's historical significance.

PENNSYLVANIA HISTORIC RESOURCE SURVEY FORM – PHOTO/SITE PLAN SHEET
Pennsylvania Historic and Museum Commission, Bureau of Historic Preservation
Commonwealth Keystone Building, 2nd Floor, 400 North Street, Harrisburg, PA 17108-1026

Survey Code:	019	Historic / Other Name:	Font General Store
Tax Parcel:	32-1-6	Address:	635 Font Road
County:	Chester 029	Municipality:	Upper Uwchlan Township

Font General Store

Photographs

Photo 1.

Photographer:

Wise Preservation Planning

Date:

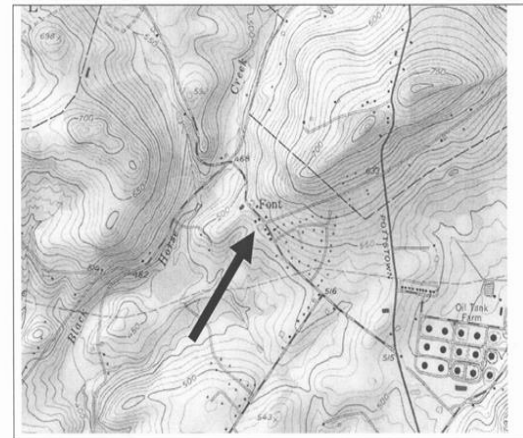
Negative Location:



Location Map

Downtown USGS Quad

(See Site Plan in Additional Documentation)

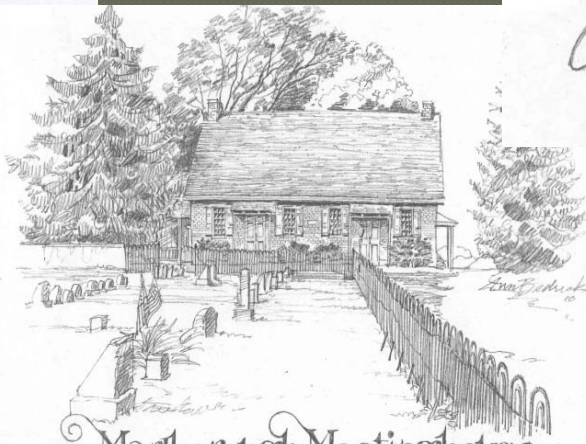




1703 House in the Meadow



Copes Bridge



Marlborough Meetinghouse

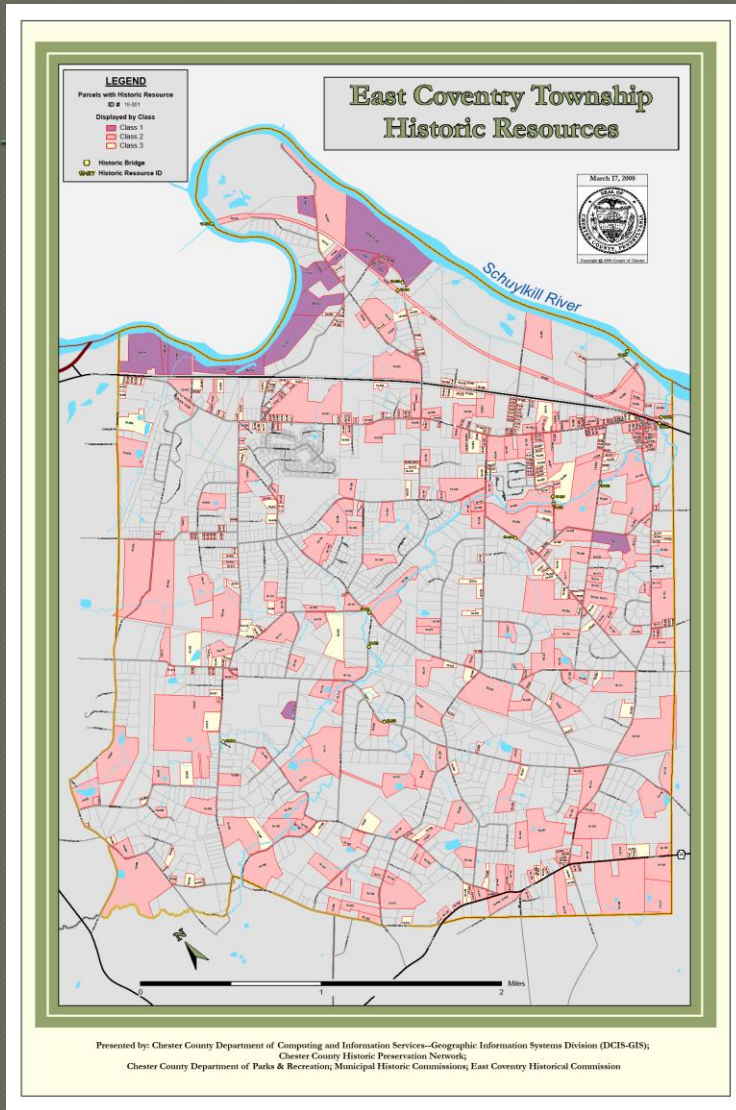


Stock Grange Farm



The Embreeville Mill

Final Products

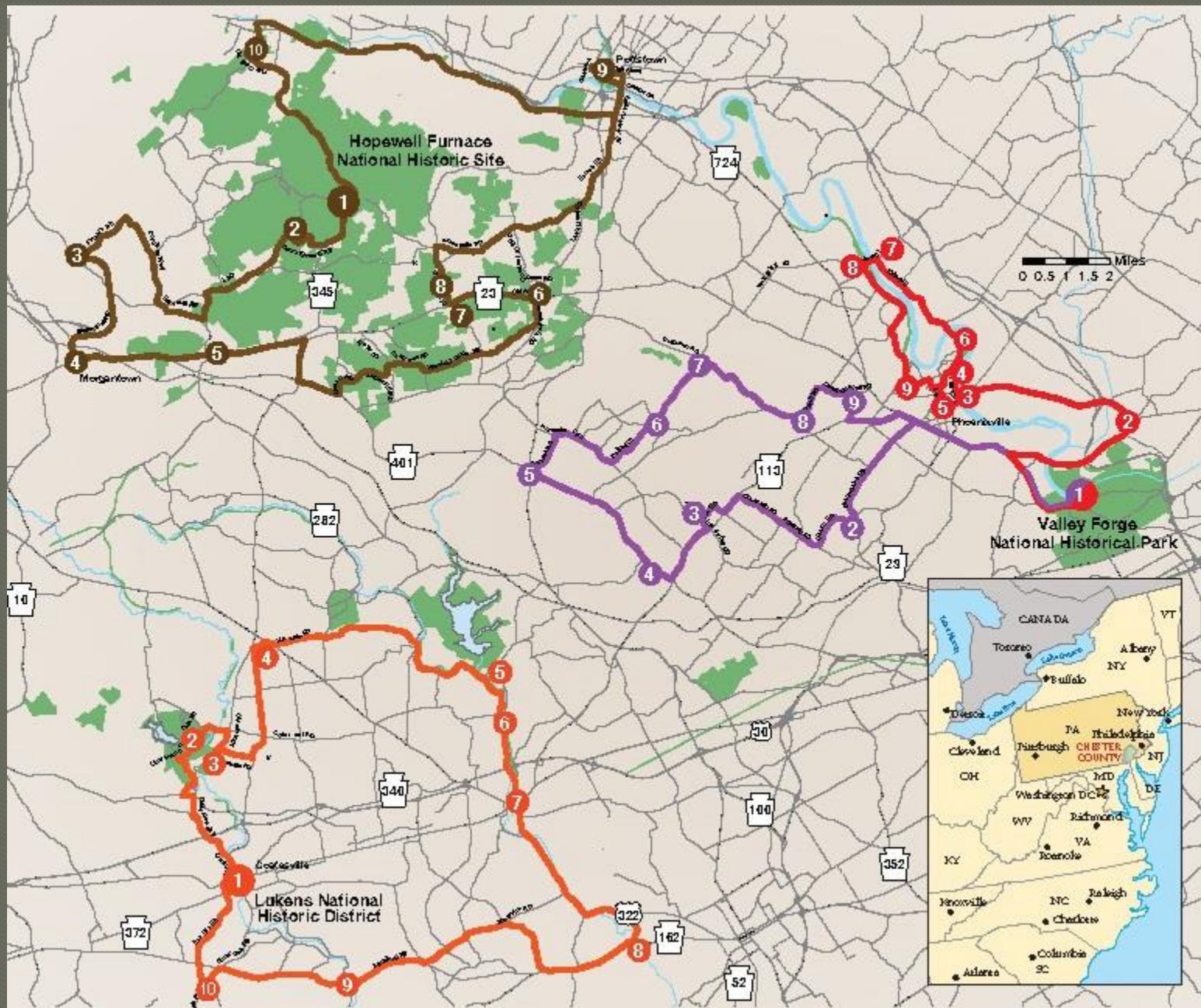


- Printed and bound
Historic Resource Atlas
- Historic Resource Wall
Map
- Disc of Materials for
Reprinting
- Historic Resource
documentation files

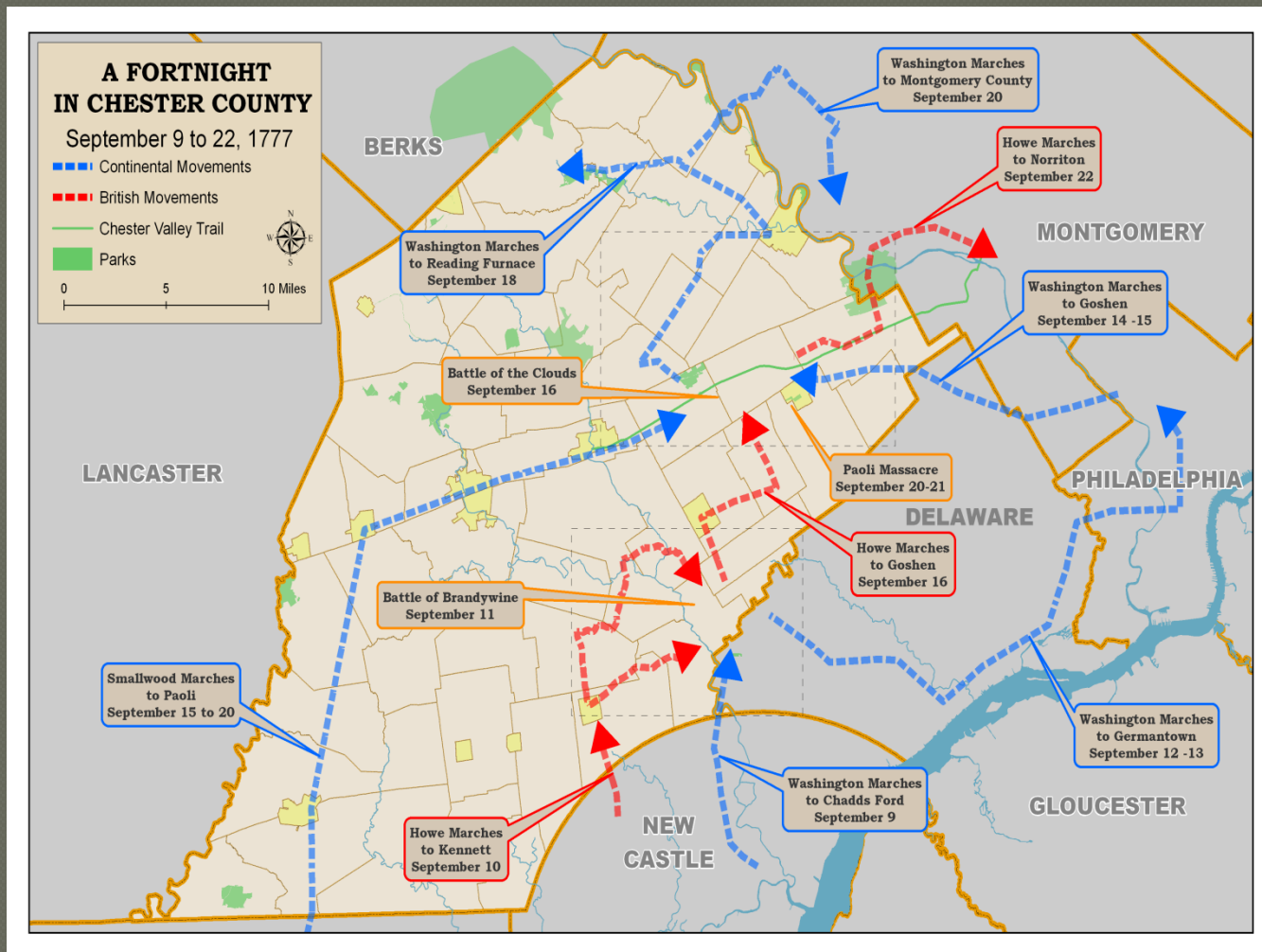
Strategic Plan For The Iron and Steel Heritage Region



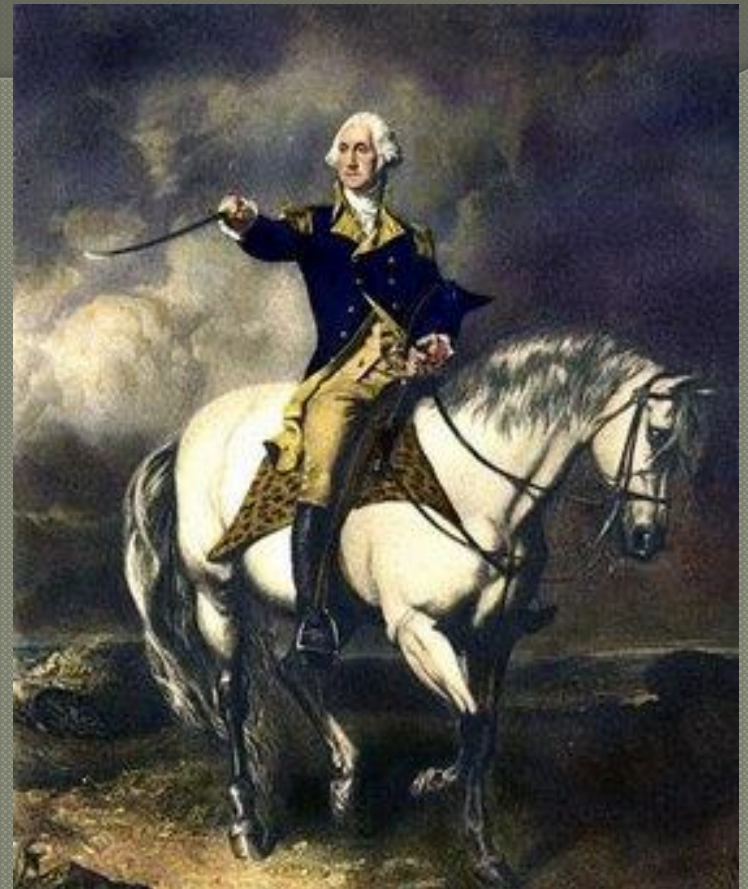
An Industry That Forged a Nation



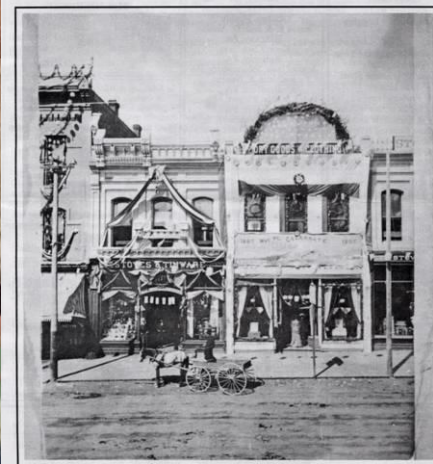
The Philadelphia Campaign of 1777 in Chester County



American Battlefield Protection Program Battle of the Clouds Historic Resource Study



Why Does It Matter?



Main Street, Ridgway 1887



-
- We have learned over time that a physical place or structure, speaks to us in ways words that even pictures cannot. It allows us to learn directly from the past whether it is by observing a home, institution, industrial or agricultural site, or walking through a park or battlefield.
 - Planning for the protection of our historic resources is a defined process, it is legally & historically sanctioned.
 - It allows our local communities and our nation to decide what defines our character as a special, safe and healthy place and to enhance, interpret and protect that heritage.
 - Preservation Planning provides guidelines to identify historic resources and to decide which ones we wish to maintain and where we will embrace change. It provides a way to document and preserve each structure's own unique place in history no matter what the decision is.

Remember: Demolition is Forever

- Congress Cuts Public Out of Early Input on Public Lands
-
- *On March 7, the Senate **voted 51-48** to nullify the BLM Planning 2.0 rule, which updated the decades-old planning process for our public lands, gave the public greater input, and improved the outlook for countless cultural resources and archaeological sites on public lands. The House of Representatives passed the measure (H.J. Res. 44) in February by a **vote of 234-186**. President Trump is expected to sign the measure overturning the rule in its entirety and prohibiting a similar rule in the future. This action by Congress is a disappointing step backward for efforts to preserve and celebrate the rich heritage of our public lands.*



Thank you!

Karen Marshall
Heritage Preservation Coordinator
Chester County Planning Commission
601 Westtown Road, Suite 270
Westtown, PA 19380
610-344-6923
kmarshall@chesco.org

Preservation Services Website:
<http://www.landscapes2.org/psd/hisres.cfm>

